

# MONTHLY MEMBERSHIP PROGRESS REPORT

LOCATION AUSTRALIA

District 201Q2

Results as of: 3/31/2023

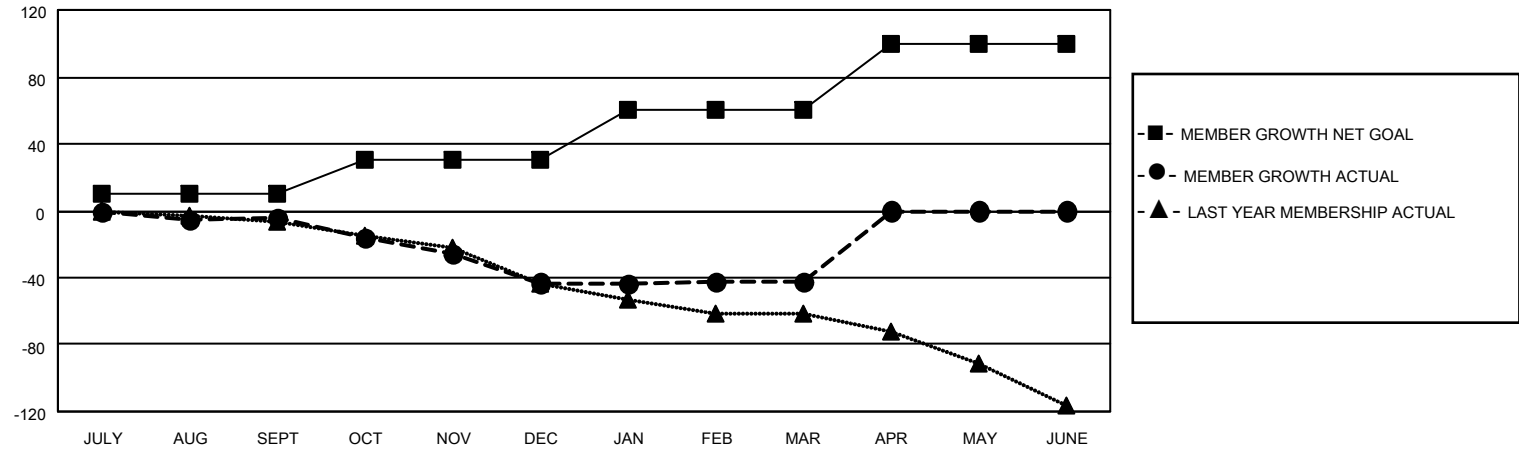
Clubs			
RESULTS FOR 2022-2023			
QUARTER	NEW CLUB GOAL	NEW CLUBS	DROPPED CLUBS
JULY/AUG/SEPT	0	0	0
OCT/NOV/DEC	1	0	2
JAN/FEB/MAR	1	0	0
APR/MAY/JUNE	1	0	0

Members			
RESULTS FOR 2022-2023			
QUARTER	MEMBER GROWTH NET GOAL	MEMBER GROWTH ACTUAL	DROPPED MEMBERS ACTUAL (including transfers)
JULY/AUG/SEPT	10	31	31
OCT/NOV/DEC	20	30	55
JAN/FEB/MAR	30	32	30
APR/MAY/JUNE	40	0	0

**GOALS AND ACTUAL NEW CLUBS CUMULATIVE**



**GOALS AND ACTUAL MEMBERS CUMULATIVE**



DROPPED CLUBS: 2	
<b>DROPPED MEMBERS</b>	
DECEASED	13
CLUB CANCELLED	0
OTHER	103
<b>TOTAL</b>	<b>116</b>

28 CLUBS OF 64 ADDED 1 OR MORE NEW MEMBERS

[CLICK HERE FOR CUMULATIVE MEMBERSHIP DATA](#)

<u>GENDER DISTRIBUTION</u>	
MALE	528 (53.88%)
FEMALE	452 (46.12%)
NON BINARY	0 (0.00%)
PREFER NOT TO ANSWER	0 (0.00%)
<hr/>	
TOTAL FAMILY UNIT MEMBERS	146
<hr/>	
FAMILY MEMBERS PAYING HALF DUES	74